



The Advising Success Network Newsletter | October 2021

In this month's newsletter, we feature a new institutional readiness assessment tool from EDUCAUSE for successful advising technology implementation; a new blog post from Achieving the Dream on mental health supports; and additional insights from the field on promoting and achieving equitable student success.

Wherever you sit at the student success table, we invite you to join the ASN as we support holistic advising redesign efforts that transform people, processes, and technologies to create better personal, academic, and professional outcomes for all students regardless of their racial or socioeconomic background. Visit the [ASN website](#) to learn more about our mission, approach, and network partners, and join us on [Twitter](#) and [LinkedIn](#).

The ASN wants to hear from you! Please [let us know](#) about your efforts to support students as they work toward achieving their personal, academic, and career goals.

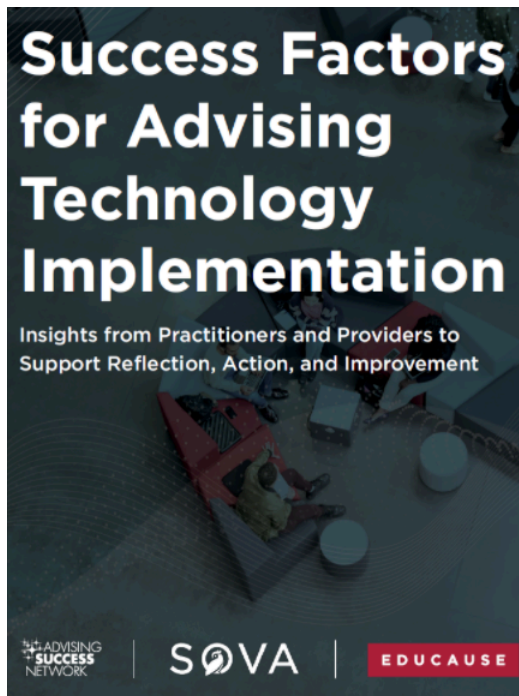
Resources from the ASN for your campus

How ready is your campus to implement advising technology?

In new research, EDUCAUSE and SOVA outline the critical importance of campus conditions in the successful and quality implementation of advising technology, and provides campus teams with resources to build capacity by considering the extent to which their leadership, culture, and existing technology ecosystems are ready for new advising tech solutions.

Success Factors for Advising Technology Implementation is an institutional readiness assessment tool intended to help orient key stakeholders and selection teams to typical prioritized product capabilities and user-experience considerations, in order to support successful procurement and implementation of advising technology.

[Download Success Factors](#)



Mental health supports require a deep understanding of our students

In a new blog, Achieving the Dream outlines how institutions can look beyond simple disaggregated data to build a more complex understanding of who their students are -- inclusive of the types of challenges that impact their mental health.

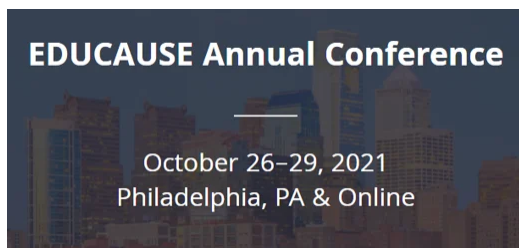
[Read the blog](#)



Insights from the field

Join EDUCAUSE October 26-29 in Philadelphia, PA & Online

The 2021 EDUCAUSE Annual Conference brings together higher ed IT professionals and technology providers from around the world to discuss their discoveries, grow professionally, and explore solutions to continuing challenges.



[Registration and details](#)

Join ATD's Mental Health & Well-Being Summit on November 4th

On November 4, 2021, ATD will host a Mental Health and Well-Being Summit as part of the Holistic Student Supports Institute. The Summit will focus on student mental health and how colleges can implement strategies to support students in this area both in and out of the classroom.



[Registration and details](#)

Equity-minded guided pathways reform

The guided pathways team at Community College Research Center outline how practitioners and researchers can develop [guided pathways reforms that are intentionally equity-minded](#).

Indigenous women tackle college during a pandemic

High Country News shares the lived experiences of [three indigenous women](#) who tackled college and their first year away from home during a pandemic.

Personalized nudging connects students to basic needs support

A new report from the Hope Center for Community, College, and Justice found that [personalized, low-cost nudging may overcome the information barrier](#) that keeps students from accessing available campus supports for basic needs.

Mission

Our mission is to help institutions build a culture of student success, with a focus on Black, Latinx, Indigenous, Asian, and Pacific Islander students, as well as students from low-income backgrounds, by identifying, building, and scaling equitable and holistic advising solutions that support all facets of the student experience.

Vision

Our vision is a higher education landscape that has eliminated race and income as predictors of student success through a reformed approach to advising, in which all students are supported through a seamless, personalized postsecondary experience that creates better personal, academic, and professional outcomes.



NASPA, 111 K Street NE, 10th Floor, Washington, District Of Columbia 20002, (202) 265-7500

[Unsubscribe](#) [Manage preferences](#)